



# Year 1 Meet the Teacher Meeting

# The Year 1 Team



Puffins Class Teacher  
Miss Clare Lawes



Robins Class Teacher  
Mrs Jessica Gladwish



Robins Class Teacher  
Mrs Sue Henson



Learning Support Assistant  
Mrs Margarita Asmanskaja  
'Miss A'



Learning Support Assistant  
Mrs Julie Ballard

# The Holly Lodge Senior Leadership Team



Headteacher  
Mrs Tammie Wisnia



Deputy Headteacher  
Miss Amy Taylor



Assistant Headteacher  
Mrs Jessica Gladwish



SENCO  
Miss Lizzie Calverley



Teaching and Learning Leader  
Mr Alan Carter



EYFS Leader  
Mrs Tracey Wheelhouse

# Our timetable

	Monday	Tuesday	Wednesday	Thursday	Friday
8:30 – 8:45	Soft Start				
8:45 – 8:55	Registration				
8:55 – 9:30	Phonics	Phonics	Phonics	Phonics	Phonics
9:30 – 9.50	Maths fluency + retrieval	Maths fluency + retrieval	Maths fluency + retrieval	Maths fluency + retrieval	Maths fluency + retrieval
9.50 – 10:10	Assembly	Assembly	Assembly	Assembly	Assembly
10:10 -10.50	Maths	Maths	Maths	Maths	Maths
10:50 – 11:05	Break				
11:05 – 12:00	Writing	Writing	Writing	Writing	Writing
12:00 – 12:50	Lunch				
12.50-1:00	Registration Reading for pleasure				
1:00 – 1.45	RE	Science	PE  PSHE (20 mins)	Geography	Art
1.45-2:00	Daily Mile	Daily Mile		Daily Mile	Daily Mile
2:00– 3:00	RE	Science		Geography	Art
3:00 – 3:10	Class Read				
3:10 - 3:15	End of Day				

## YEARLY OVERVIEW – YEAR 1

	Autumn 1	Autumn 2	Spring 1	Spring 2	Summer 1	Summer 2
Science	Seasons and weather	<p>Materials</p> <p>Which material is most common in the classroom?</p> <p>Which is the best brand kitchen towel for absorbing water?</p>	<p>Animals, including humans</p> <p>How many of each type of animal are there?</p>	<p>Conservation</p> <p>How does littering affect animals?</p>	<p>Plants</p> <p>Do the tallest trees have the biggest leaves?</p> <p>How can we identify trees that we observed on our tree hunt?</p>	
PE	Multi-skills	Dance	Multi-skills	Athletics	Gymnastics	Multi-skills
History			How did Rosa Parks change society?			
Geography	Where do we live?	What are the world's continents and oceans?			<p>Where is India?</p> <p>Jungles</p> <p>Seoni</p>	
RE	Using our five senses, what could we notice in a place of worship? (multi-faith)	Who is Jesus? (Christianity)		How did the world come to be? (Christianity and Judaism)		

<b>Art</b>	<b>Drawing</b> Observational drawing of an object found in nature	<b>Painting</b> Replicate section of a surrealist painting (Joan Miro)			<b>Sculpture</b> Create a model using recyclable objects (Yayoi Kusama, Alexander Calder)	
<b>Computing</b>			<b>Technology</b> Use information technology safely and successfully (Chromebooks)	<b>Digital Painting</b> Create a digital self-portrait (Chromebook, Paintz app)	<b>Programming</b> Write an algorithm to move a Bee Bot (Bee Bots)	
<b>D&amp;T</b>			<b>Cooking and Nutrition</b> Fruits and vegetables (making a smoothie)	<b>Mechanisms</b> Moving storybook		
<b>Music</b>				<b>Charanga 1.1</b> 'My Musical Heartbeat'	<b>Charanga 1.3</b> 'Exploring Sounds'	
<b>PHSE</b>	What is the same and different about us?	What helps us stay healthy?	Who is special to us?	What can we do with money?	Who helps to keep us safe?	How can we look after the world?

# Learning this half-term

## Notices and Reminders

- All clothes to be named
  - Water in water bottles
  - PE days are:
    - Puffins – Tuesday
    - Robins - Wednesday
- Please come to school in your PE kit.



## Phonics

This half term in phonics, the children will be revising the phase 5 sounds:

<ay>, <ou>, <ie>, <ea>, <oy>, <ir>, <ue>, <aw>, <wh>, <ph>, <ew>, <oe>



## Writing

This half term in writing, the children will be learning some stories by heart. They will then write them using their phonics. Finally, they will start to learn how to do some simple editing.

The texts the children will learn are:

- The Three Little Pigs
- Pigs!



## Maths

This half term in maths, the children will be learning to count forwards and backwards, sorting and grouping objects and learning how to find one more and one less of a given number to ten.

They will finish the term by learning about 2D and 3D shapes.



## Science

This half term in science, the children will be learning about the weather and the seasons. They will talk about and compare weather using terms such as cloudy, sunny, hot and will learn that there are 4 seasons and that each season has its own weather pattern and temperature.



## PE

This half term in PE, the children will be learning about how exercise changes how our bodies feel and what to do if we feel hot or out of breath. As the children develop their sense of space, they will learn to master the underarm and overarm throw. They will learn to catch by forming a nest shape with their hands, how to kick a stationary ball towards a target and how to pass to a partner in different ways.



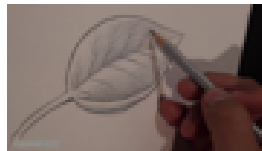
## RE

This half term in RE, the children will be learning about places of worship and the definition of religion. They will be finding out about a church, a mosque and a synagogue in more detail. They will be using their 5 senses to describe what it is like inside each of these buildings.



## Art

This half term in art, the focus is drawing. The children will learn what a drawing is and will explore the use of tone and texture using a variety of different materials. They will then use these new skills to create observational drawings of natural objects.



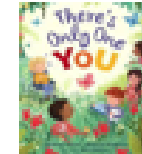
## Geography

The big question this half term is "Where do we live?". The children will be looking at maps and beginning to understand how to locate and describe physical and human features. The children will know how to use directional language to describe the location of a feature on a map.



## PSHE

This half term in PSHE, the children will be learning some key words to help them understand what is the same and different about ourselves. They will explore what their likes, dislikes and strengths are and how these make us all unique.





# Trips and experiences

- Spring 1: Rosa Parks Workshop – Linked to history
- Summer 1 – Wisley Gardens – Linked to Science

# PE

- PE kits to be worn to school
- Weekly PE lesson is on a Tuesday for Puffins, Wednesday for Robins
- Daily Mile

# Statutory Assessments

- Phonics Screening Check - WB 9<sup>th</sup> June 2025

# Homework

- Daily reading

# Keeping in touch with us

- Class email address [Year1@hollylodge.kite.academy](mailto:Year1@hollylodge.kite.academy)
- Useful for non-urgent messages
- Urgent messages – at drop off or via the school office